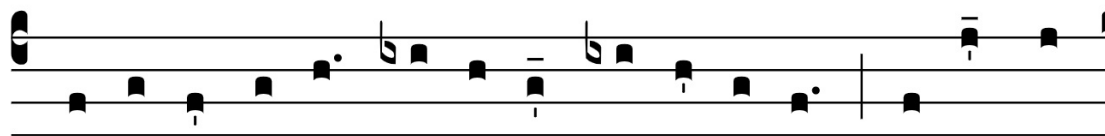


Regina Coeli

Ant
6

R



E-gí-na cæ-li * lætá-re, al-le-lú-ia: Qui- a quem



me-ru- í-sti portá-re, al-le-lú-ia: Re-surré-xit, sic-ut di-xit,



al-le- lú-ia: O-ra pro no-bis De-um, al-le-lú-ia.

Re - gí - na cæ - li, læ - tá - re, al - le - lú - ia. Qui - a quem



me-ru - í - sti por-tá-re, al - le-lú-ia. Re-sur-rè-xit, si-cut di-xit,



al - le - lú - ia. O - ra pro no-bis De-um, al - le - lú - ia.

